

HYDRAULIC HAND PUMPS

W - X SERIES



**NEW
MODELS**



HYDRAULIC HAND PUMPS



- ✓ **W** series pumps are for use with **Single Acting** cylinders.
- ✓ **X** series pumps are fitted with 4-way 3 position valve for use with **Double Acting** cylinders.
- ✓ The pump range includes single and two speed models.
- ✓ Two speed models provide rapid cylinder advance until contact is made with the load.
- ✓ Hydraulic port on all models is 3/8"-NPTF female.
- ✓ W and X series pumps are fitted with internal safety valves to prevent overpressure.
- ✓ W24507 has a rectangular tank.
- ✓ WP21007 and XP21007 models are foot pedal operated.
- ✓ All pumps are fitted with handle or clips for ease of carrying.



WP21007 pump, foot pedal operated.



W26507, X26507 pumps.



Type

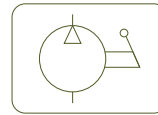
W - X

Capacity

0,28 - 6,5 litres

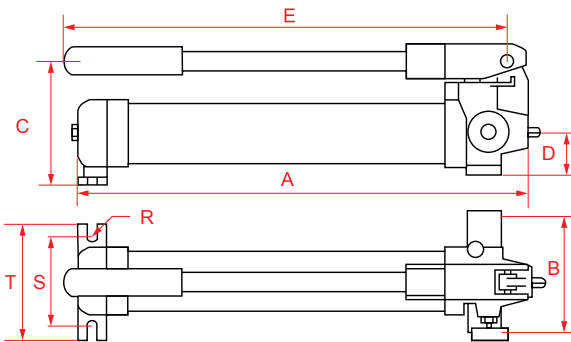
Max. pressure

700 bar

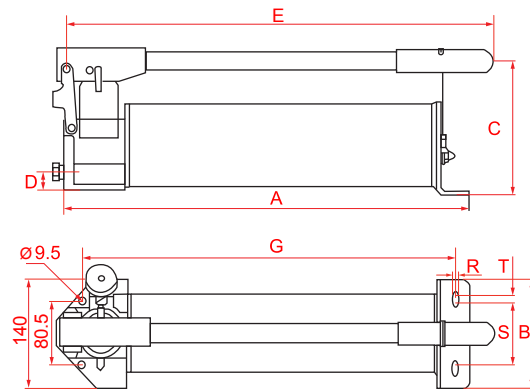


SINGLE ACTING W

W20307 / W10607 / W20807 / W11407 / W21807

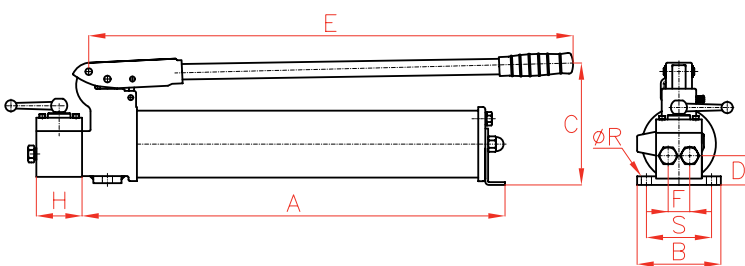


W22607 / W24507



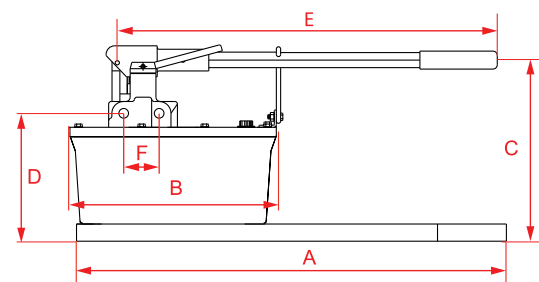
DOUBLE ACTING X

X22607 / X24307



SINGLE / DOUBLE ACTING W - X

W26507 / X26507



SINGLE ACTING

Model	Speeds	Usable oil	Handle effort	Oil displacement / stroke (cm ³)		Pressure rating (bar)		A	B	C	D	E	G	R	S	T	Weight	Model
				1 st Stage	2 nd Stage	1 st Stage	2 nd Stage											
LARZEP	No.	cm ³	kg	1 st Stage	2 nd Stage	1 st Stage	2 nd Stage	mm	mm	mm	mm	mm	mm	mm	mm	mm	kg	LARZEP
W20307	2	280	40	7	1,0	20	700	331	138	124	44	380	-	7	38	66	5,5	W20307
W10607	1	640	43	-	3,2	-	700	557	137	144	55	608	-	-	-	90	7,3	W10607
W20807	2	640	45	13	2,8	17	700	563	137	144	55	608	-	-	-	90	8,2	W20807
WP21007	2	1.000	43	12	2,0	50	700	550	176	445*	52	540	-	9,0	185,0	176	9,0	WP21007
W11407	1	1.400	43	-	3,2	-	700	526	137	174	55	608	-	-	-	106	10,9	W11407
W21807	2	1.800	49	13	2,8	21	700	548	147	174	23	558	-	10,5	82,0	140	11,3	W21807
W22607	2	2.600	41	46	4,0	28	700	656	140	186	41	680	616	10,5	80,5	10	12,7	W22607
W24507	2	4.450	43	46	4,0	28	700	574	146	189	41	643	528	10,5	80,5	10	18,1	W24507
W26507	2	6.500	37	126	4,9	28	700	635	312	233	191	640	-	-	-	-	20,0	W26507

* with the pedal completely open

DOUBLE ACTING

Model	Speeds	Usable oil	Handle effort	Oil displacement / stroke (cm ³)		Pressure rating (bar)		A	B	C	D	E	F	H	R	S	Weight	Model
				1 st Stage	2 nd Stage	1 st Stage	2 nd Stage											
LARZEP	No.	cm ³	kg	1 st Stage	2 nd Stage	1 st Stage	2 nd Stage	mm	mm	mm	mm	mm	mm	mm	mm	mm	kg	LARZEP
XP21007	2	1.000	43	12,0	2,0	50	700	550	176	445*	52	540	-	-	9,0	185	9,0	XP21007
X22607	2	2.600	41	46,0	4,0	27	700	654	140	186	54	680	-	125	9,5	80,5	14,3	X22607
X24307	2	4.200	49	16,5	2,8	20	700	570	108	210	75	560	40	50	8,5	86	22,8	X24307
X26507	2	6.500	37	126,0	4,9	28	700	635	312	233	193	644	70	-	-	-	20,8	X26507



34-039 ENG 01-2020 © Larzep - Subject to change without notice.

Larzep, S.A.

Avenida Urtiaga, 6 | 48269 Mallabia, Spain | Tel: (+34) 943 17 12 00 | Fax: (+34) 943 17 41 66 | E-mail: info@larzep.com

Performance under Pressure

www.larzep.com